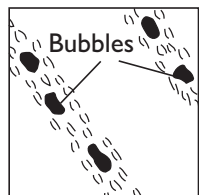
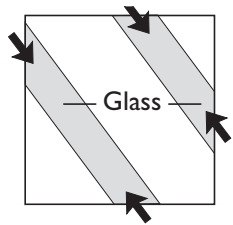
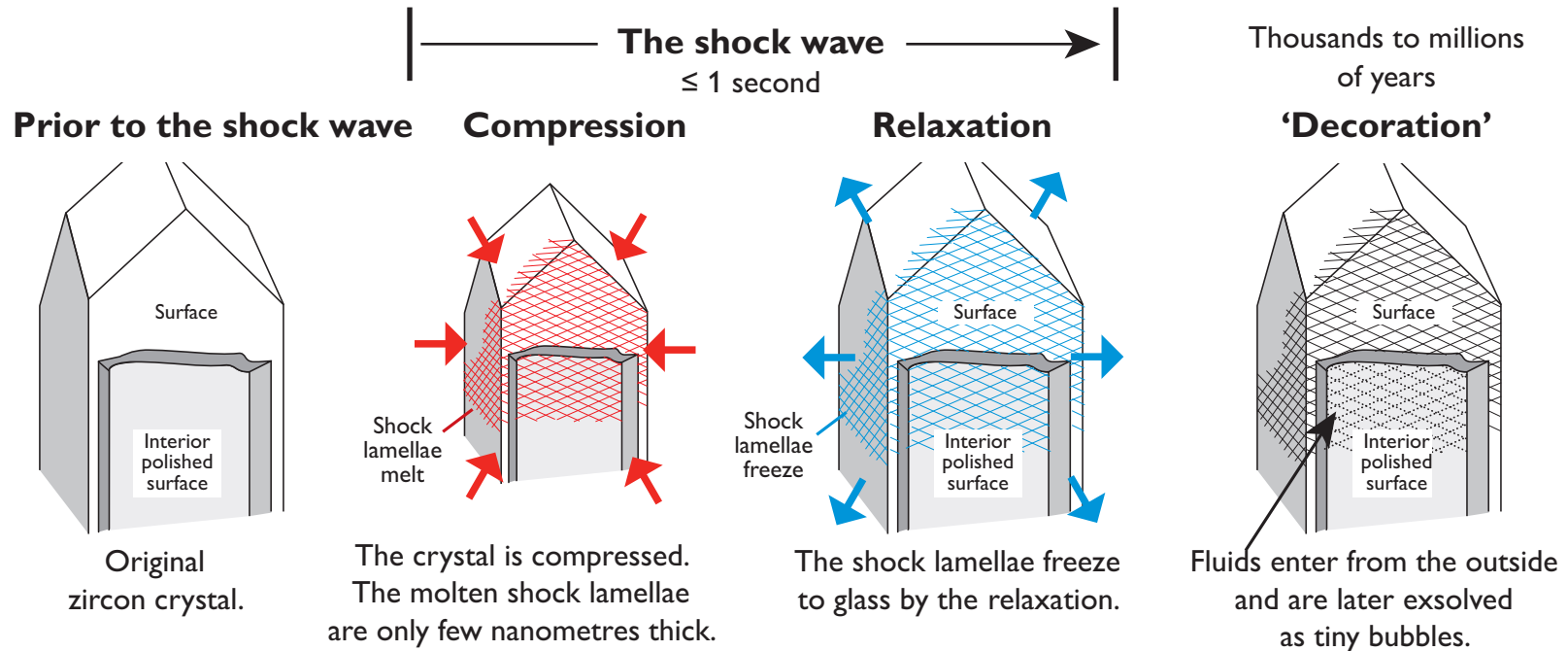
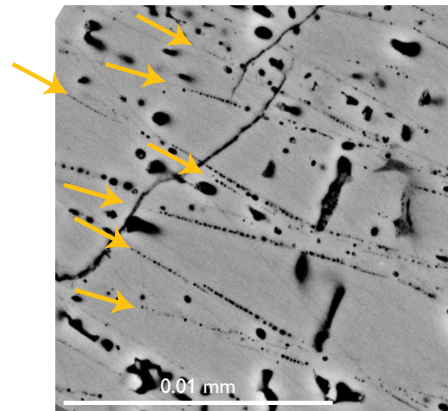


SHOCK LAMELLAE. The extreme compression and relaxation of the shock wave induce instantaneous melting and freezing along certain crystal planes

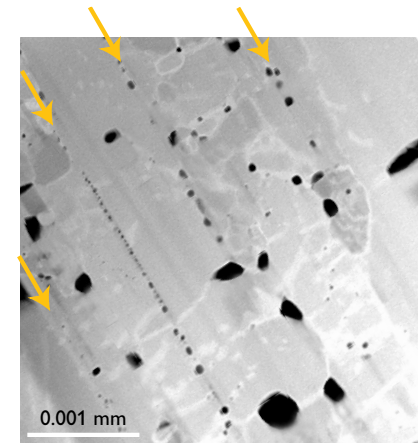


Nanoscale fluid bubbles are exsolved along the shock lamellae, as the glass later crystallises.

Schematic model.
Formation of 'decorated' shock lamellae in zircon.



Ultra-thin 'decorated' shock lamellae in zircon. Microscale, scanning electron microscopy.



Ultra-thin 'decorated' shock lamellae in zircon. Nanoscale, transmission electron microscopy.